

E X - C A B L E G L A N D S

Plastic version for Zone 1 and Zone 21 - according to EN 60079: 2012

Cable glands with metric screw-in threads are now standard and had replace the PG cable glands that were formally used.

3

The new CEAG plastic cable glands are in accordance with EN 60079-7 and can be used in Ex-e/Ex-i housings in hazardous explosive areas of the Zones 1, 21, 2 and 22.

Optional and not used cable glands must be closed with certified blanking plugs. The blanking plugs allow for a flexible and cost effective utilization of the explosion-protected appliances. Changes and upgrades can be then easily carried out at a later date.

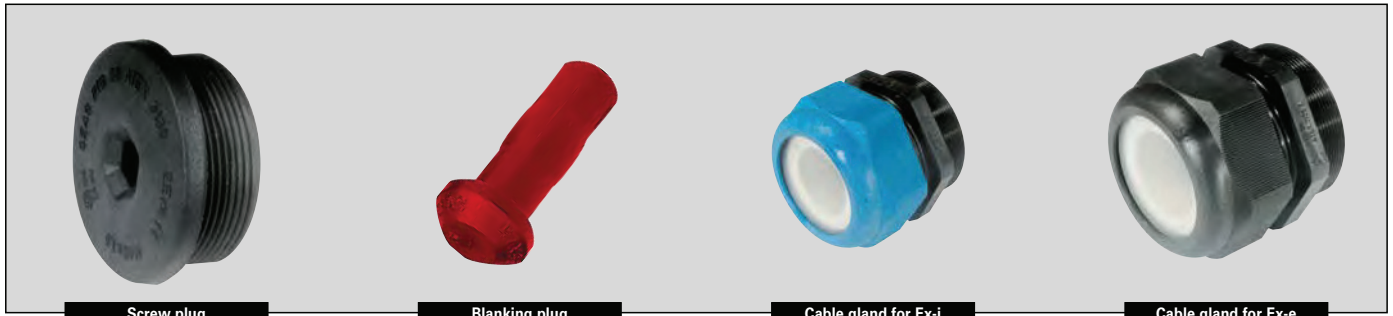
The outstanding feature of the CEAG cable glands is the large cable connection area.

A high IP safety standard is achieved with the integrated sealing lip on the screw-in cable entries. Depending on the surface roughness the use of an additional sealing ring may not be necessary. The good mechanical and handling features are achieved by using a modified Polyamide material and a optimized tooling area.

International approvals

- Large cable connection area
- Same wrench tool for both hexagons
- Conform accd. to latest EN 60079-0:2012
- Safety standard IP66
- Optimized tooling area
- Trapezoid thread, for a secure hold





Screw plug

Blanking plug

Cable gland for Ex-i

Cable gland for Ex-e

Technical data

Ex e cable glands | Blanking plug | Reducing rings

| | |
|--|--|
| Marking accd. to 94/9/EC | ⊕ II 2 G Ex eb IIC Gb / ⊕ II 2 D Ex tb IIIC Db IP66 (not for M63x1.5) |
| EC-Type Examination Certificate | M12-M16 PTB 99 ATEX 3101 X / M20-M63 PTB 99 ATEX 3128 X PTB 14 ATEX 1015X |
| IECEX Certificate of Conformity | IECEX PTB 05.0004X IECEX PTB 14.0027X |
| Marking accd. to IECEx | Ex eb IIC Gb / Ex tb IIIC Db |
| Permissible ambient temperature | -20 °C to +70 °C (standard) |
| M20 | -40 °C bis +70 °C (option) |
| M25 - M63 | -55 °C bis +70 °C (option) |
| Degree of protection accd. to EN 60529 | IP66 / IP68: 1 m water depth for 0.5 h |
| Enclosure material | Polyamide |

Ex-e screw plug

| | |
|--|--|
| Marking accd. to 94/9/EC | ⊕ II 2 G Ex e II / ⊕ II 2 D Ex tD A21 IP66 |
| EC-Type Examination Certificate | M20-M50: PTB 98 ATEX 3130 / M63: PTB 03 ATEX 1058 (nur II 2 G) |
| IECEX Certificate of Conformity | IECEX PTB 03.0000 (M20 - M50) |
| Marking accd. to IECEx | Ex e II |
| Permissible ambient temperature | M20-M50: -55 °C to +55 °C / M63: -20 °C to +55 °C |
| Degree of protection accd. to EN 60529 | IP66 / IP68: 1 m water depth for 0.5 h |
| Enclosure material | Polyamide |

Ex-cable glands



Cable gland for Ex-e



Cable gland for Ex-i



Multiple cable gland

Ordering details

| Thread | CableØ mm | | A/F mm | L mm | E mm | Weight kg | OU | Order No. (-20 °C up to +70 °C) | Order No. (-40/-55 °C up to +70 °C) |
|--|-----------|-------------|--------|------|------|-----------|----|------------------------------------|--|
| | seal. 1+2 | seal. 2 | | | | | | | |
| Ex-e cable gland with short thread accd. to EN 50262 -black | | | | | | | | | |
| M12 x 1.5 | --- | 5 - 7 | 15 | 19.3 | 8 | 0.003 | 20 | GHG 960 1955 R0001 | --- |
| M16 x 1.5 | --- | 7 - 10 | 20 | 23.0 | 8 | 0.006 | 20 | GHG 960 1955 R0002 | --- |
| M20 x 1.5 | 7 - 9 | 9.5 - 13 | 24 | 25.0 | 8 | 0.09 | 20 | GHG 960 1955 R0003 | --- |
| M20 x 1.5 | 7 - 9 | 9.5 - 11 | 24 | 25.0 | 8 | 0.09 | 20 | --- | GHG 960 1955 R0010 |
| M25 x 1.5 | 10 - 13 | 13.5 - 17.5 | 29 | 29.5 | 8 | 0.017 | 20 | GHG 960 1955 R0004 | --- |
| M25 x 1.5 | 10 - 13 | 13.5 - 15 | 29 | 29.5 | 13 | 0.018 | 20 | --- | GHG 960 1955 R0009 |
| M32 x 1.5 | 14 - 17 | 17.5 - 21 | 36 | 35.5 | 10 | 0.026 | 20 | GHG 960 1955 R0005 | GHG 960 1955 R0011 |

Ex-e cable gland with long thread -black

| | | | | | | | | | |
|-----------|---------|-----------------------|----|------|----|-------|----|---------------------------|---------------------------|
| M12 x 1.5 | --- | 5 - 7 | 15 | 19.3 | 12 | 0.003 | 20 | GHG 960 1955 R0021 | --- |
| M16 x 1.5 | --- | 7 - 10 | 20 | 23.0 | 12 | 0.007 | 20 | GHG 960 1955 R0022 | --- |
| M20 x 1.5 | 7 - 9 | 9.5 - 13 | 24 | 25.0 | 13 | 0.010 | 20 | GHG 960 1955 R0023 | --- |
| M20 x 1.5 | 7 - 9 | 9.5 - 11 | 24 | 25.0 | 13 | 0.010 | 20 | --- | GHG 960 1955 R0029 |
| M25 x 1.5 | 10 - 13 | 13.5 - 17.5 | 29 | 29.5 | 13 | 0.018 | 20 | GHG 960 1955 R0024 | --- |
| M25 x 1.5 | 10 - 13 | 13.5 - 15 | 29 | 29.5 | 13 | 0.018 | 20 | --- | GHG 960 1955 R0030 |
| M32 x 1.5 | 14 - 17 | 17.5 - 21 | 36 | 35.5 | 15 | 0.029 | 20 | GHG 960 1955 R0025 | GHG 960 1955 R0031 |
| M40 x 1.5 | 19 - 22 | 22 - 28 | 46 | 39.5 | 15 | 0.046 | 10 | --- | GHG 960 1955 R0026 |
| M50 x 1.5 | 24 - 28 | 28 - 35 | 55 | 44.0 | 16 | 0.073 | 10 | --- | GHG 960 1955 R0027 |
| M63 x 1.5 | 29 - 35 | 36 - 48 ¹⁾ | 68 | 47.0 | 16 | 0.116 | 5 | --- | GHG 960 1955 R0028 |

Ex-i cable gland with short thread -blue

| | | | | | | | | | |
|-----------|---------|-------------|----|------|----|-------|----|---------------------------|---------------------------|
| M12 x 1.5 | --- | 5 - 7 | 15 | 19.3 | 8 | 0.003 | 20 | GHG 960 1955 R0101 | --- |
| M16 x 1.5 | --- | 7 - 10 | 20 | 23.0 | 8 | 0.006 | 20 | GHG 960 1955 R0102 | --- |
| M20 x 1.5 | 7 - 9 | 9.5 - 13 | 24 | 25.0 | 8 | 0.009 | 20 | GHG 960 1955 R0103 | GHG 960 1955 R0109 |
| M25 x 1.5 | 10 - 13 | 13.5 - 17.5 | 29 | 29.5 | 8 | 0.017 | 20 | GHG 960 1955 R0104 | GHG 960 1955 R0110 |
| M32 x 1.5 | 14 - 17 | 17.5 - 21 | 36 | 35.5 | 10 | 0.026 | 20 | GHG 960 1955 R0105 | GHG 960 1955 R0111 |

Ex-i cable gland with long thread -blue

| | | | | | | | | | |
|-----------|---------|-----------------------|----|------|----|-------|----|---------------------------|---------------------------|
| M12 x 1.5 | --- | 5 - 7 | 15 | 19.3 | 12 | 0.003 | 20 | GHG 960 1955 R0121 | --- |
| M16 x 1.5 | --- | 7 - 10 | 20 | 23.0 | 12 | 0.007 | 20 | GHG 960 1955 R0122 | --- |
| M20 x 1.5 | 7 - 9 | 9.5 - 13 | 24 | 25.0 | 13 | 0.010 | 20 | GHG 960 1955 R0123 | GHG 960 1955 R0129 |
| M25 x 1.5 | 10 - 13 | 13.5 - 17.5 | 29 | 29.5 | 13 | 0.018 | 20 | GHG 960 1955 R0124 | GHG 960 1955 R0130 |
| M32 x 1.5 | 14 - 17 | 17.5 - 21 | 36 | 35.5 | 15 | 0.029 | 20 | GHG 960 1955 R0125 | GHG 960 1955 R0131 |
| M40 x 1.5 | 19 - 22 | 22 - 28 | 46 | 39.5 | 15 | 0.046 | 10 | --- | GHG 960 1955 R0126 |
| M50 x 1.5 | 24 - 28 | 28 - 35 | 55 | 44.0 | 16 | 0.073 | 10 | --- | GHG 960 1955 R0127 |
| M63 x 1.5 | 29 - 35 | 36 - 48 ¹⁾ | 68 | 47.0 | 16 | 0.116 | 5 | --- | GHG 960 1955 R0128 |

Multiple cable glands -black

| | | | | | | | | |
|-----------|-------------|----|------|----|-------|----|---------------------------|-----|
| M25 x 1.5 | 2 x 4.5 - 7 | 29 | 29.5 | 8 | 0.019 | 20 | GHG 960 1955 R0054 | --- |
| M32 x 1.5 | 4 x 4.5 - 7 | 36 | 35.5 | 10 | 0.030 | 20 | GHG 960 1955 R0055 | --- |

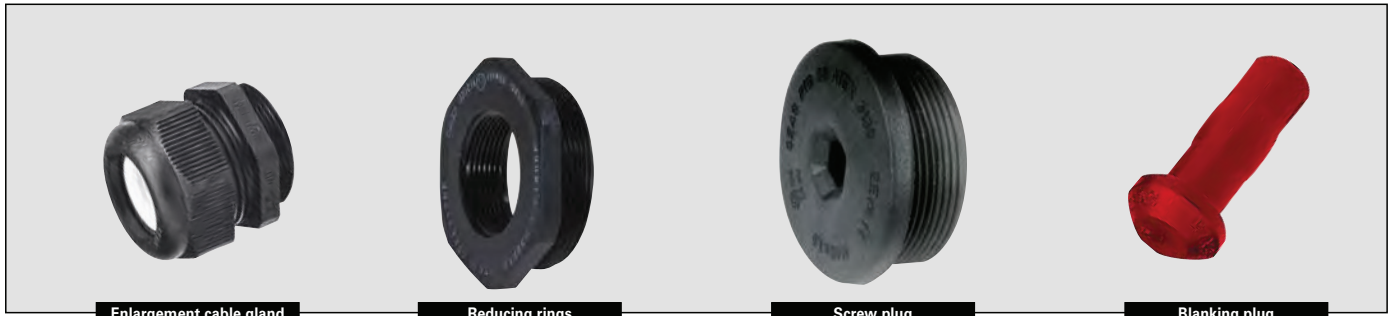
Slotted cable glands for special cables: (Breakout-internal cable type orange/ Ultra-Fox Plus type 903 AG 621 02 709/ Ehret / ICS 24 type 84 305 ... ²⁾

| | | | | | | | |
|-----------|---------------|----|------|---|-------|----|---|
| M20 x 1.5 | ²⁾ | 24 | 25.0 | 8 | 0.010 | 20 | GHG 960 1955 R0405 (Ex-e -black) |
| M20 x 1.5 | ²⁾ | 24 | 25.0 | 8 | 0.010 | 20 | GHG 960 1955 R0405 (Ex-i - blue) |

1) M63 with additional sealing

2) Cable dimensions and ambient temperatures see operating instruction

Cable glands with PG-thread are available on request. The order No. will show 1 pcs. Please note that only order units (OU) can be ordered.



Enlargement cable gland

Reducing rings

Screw plug

Blanking plug

| Thread | Cable Ø mm | | A/F | L | E | Weight | OU | Order No. | Order No. |
|---|------------|-------------------------|-----|------|----|--------|----|-----------------------|-----------------------|
| | Seal 1+2 | Seal 2 | mm | mm | mm | kg | | (-20 °C up to +70 °C) | (-55 °C up to +70 °C) |
| Enlargement cable glands (reduced thread diameter) | | | | | | | | | |
| M16/M20 | 7 - 9 | 9,5 - 13 | 24 | 25,0 | 12 | 0,010 | 20 | GHG 960 1956 R0002 | |
| M20/M25 | 10 - 13 | 13,5 - 17,5 | 29 | 29,5 | 13 | 0,018 | 20 | GHG 960 1956 R0003 | |
| M25/M32 | 14 - 17 | 17,5 - 21 | 36 | 35,5 | 13 | 0,029 | 20 | | GHG 960 1956 R0004 |
| M32/M40 | 19 - 22 | 22,0 - 28 | 46 | 39,5 | 15 | 0,046 | 10 | | GHG 960 1956 R0005 |
| M40/M50 | 24 - 28 | 28,0 - 35 | 55 | 44,0 | 15 | 0,073 | 10 | | GHG 960 1956 R0006 |
| M50/M63 | 29 - 35 | 36,0 - 48 ¹⁾ | 68 | 47,0 | 16 | 0,116 | 5 | | GHG 960 1956 R0007 |

| Blanking plug | E | Ø D | Weight | OU | Order No. |
|-------------------------|------|------|--------|----|-----------------------|
| | mm | mm | kg | | (-55 °C up to +70 °C) |
| for cable glands | | | | | |
| M12 | 30,3 | 6,0 | 0,001 | 20 | GHG 960 1944 R0101 |
| M16 | 33,0 | 7,0 | 0,001 | 20 | GHG 960 1944 R0102 |
| M20 | 34,5 | 8,5 | 0,002 | 20 | GHG 960 1944 R0103 |
| M25 | 36,0 | 11,0 | 0,003 | 20 | GHG 960 1944 R0104 |
| M32 | 39,5 | 14,0 | 0,005 | 20 | GHG 960 1944 R0105 |
| M40 | 42,0 | 20,0 | 0,018 | 10 | GHG 960 1944 R0106 |
| M50 | 44,0 | 26,0 | 0,033 | 10 | GHG 960 1944 R0107 |
| M63 | 45,0 | 34,0 | 0,108 | 5 | GHG 960 1944 R0108 |

| Thread | L | E | Ø D | Weight | OU | Order No. |
|-------------------|-----|----|------|--------|----|-----------------------|
| | mm | mm | mm | kg | | (-55 °C up to +70 °C) |
| Screw plug | | | | | | |
| M16 x 1,5 | 4,0 | 12 | 21,5 | 0,002 | 20 | GHG 960 1952 R0111 |
| M20 x 1,5 | 4,0 | 13 | 25,5 | 0,004 | 20 | GHG 960 1952 R0112 |
| M25 x 1,5 | 4,0 | 13 | 30,5 | 0,007 | 20 | GHG 960 1952 R0113 |
| M32 x 1,5 | 5,5 | 15 | 37,5 | 0,013 | 10 | GHG 960 1952 R0114 |
| M40 x 1,5 | 5,5 | 15 | 45,5 | 0,020 | 10 | GHG 960 1952 R0115 |
| M50 x 1,5 | 5,5 | 16 | 55,5 | 0,030 | 5 | GHG 960 1952 R0116 |
| M63 x 1,5 | 6,5 | 16 | 85,0 | 0,040 | 5 | GHG 960 1952 R0117 |

| Thread 1 | Thread 2 | A/F | L | E | L1 | Weight | OU | Order No. |
|-----------------------|-----------|-----|----|----|----|--------|----|-----------------------|
| | | mm | mm | mm | mm | kg | | (-55 °C up to +70 °C) |
| Reducing rings | | | | | | | | |
| M20 x 1,5 | M16 x 1,5 | 24 | 6 | 8 | 8 | 0,014 | 20 | GHG 960 1946 R0071 |
| M25 x 1,5 | M20 x 1,5 | 29 | 6 | 8 | 8 | 0,016 | 20 | GHG 960 1946 R0072 |
| M32 x 1,5 | M20 x 1,5 | 36 | 6 | 10 | 6 | 0,017 | 20 | GHG 960 1946 R0056 |
| M32 x 1,5 | M25 x 1,5 | 36 | 6 | 10 | 10 | 0,016 | 20 | GHG 960 1946 R0074 |
| M40 x 1,5 | M25 x 1,5 | 46 | 6 | 10 | 8 | 0,023 | 10 | GHG 960 1946 R0059 |
| M40 x 1,5 | M32 x 1,5 | 46 | 6 | 10 | 10 | 0,021 | 10 | GHG 960 1946 R0077 |
| M50 x 1,5 | M32 x 1,5 | 55 | 6 | 12 | 10 | 0,036 | 10 | GHG 960 1946 R0062 |
| M50 x 1,5 | M40 x 1,5 | 68 | 6 | 12 | 10 | 0,032 | 10 | GHG 960 1946 R0080 |
| M63 x 1,5 | M40 x 1,5 | 68 | 6 | 12 | 10 | 0,040 | 5 | GHG 960 1946 R0065 |
| M63 x 1,5 | M50 x 1,5 | 68 | 6 | 12 | 12 | 0,030 | 5 | GHG 960 1946 R0083 |

1) M63 with additional sealing

Cable glands with PG-thread are available on request.

The order No. will show 1 pcs. Please note that only order units (OU) can be ordered.

| Ex-cable glands |



Cable gland



Screw plug



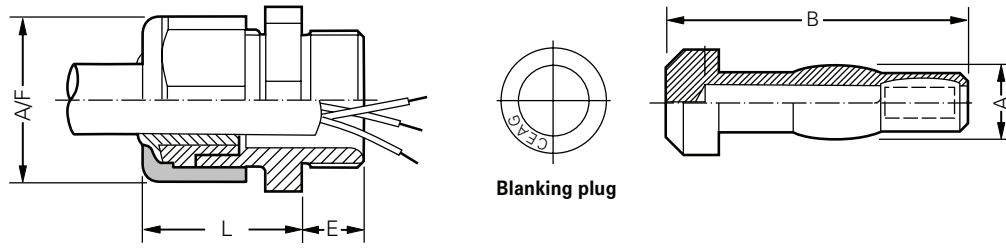
Blanking plug



Reducing ring

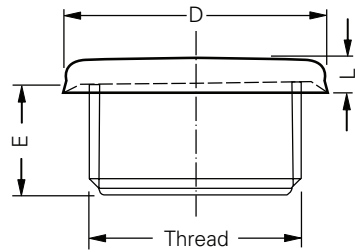
3

Dimension drawing

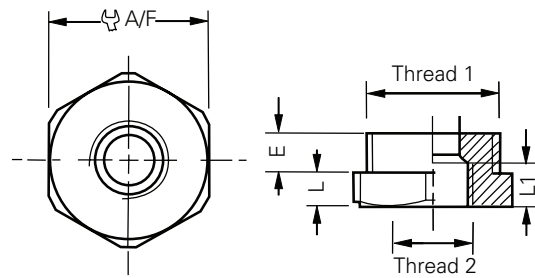


Blanking plug

Cable gland



Screw plug



Reducing rings

Dimensions in mm