

# 3.2

## Ex-d/e Cable Glands Metal Design

For Zone 1, 2, 21 and 22 according EN 60079-0:2012 / IEC 60079-0: 2011

3

### Designed according to the latest standards

For introducing cables or leads into metal housings, explosion-protected housing or, if reinforced cables have to be introduced, metal cable glands are used. Metal glands are designed for use in areas of Zone 1, 2, 21 and Zone 22 at no risk of explosion and for cables with and without reinforcement.

Depending on the area of use, these cable entries are certified with the type of protection Ex-d or Ex-e pursuant to the latest standard EN 60079-1 or EN 60079-7.

### For all applications

For special applications, the cable glands are available in high-quality stainless steel 316L, nickel plated brass, marine bronze or anodised AV4PB.

In the case of systems or housings manufactured according to the NEC (National Electrical Code), the line or the connecting cable must be introduced via conduits, mounting fittings, etc. with NPT threads. Optional holes, or those that are not used, must be closed with a screw connection certified for this purpose.

Special versions are available for different applications.



### Features

- Certified accord. to the latest Standard EN 60079-0: 2009
- Mechanical, chemical and thermal resistance
- Single range with global compliance: NEC, IEC standard and marine approval. All covered with one product.
- High-quality alloy



ADE 6F

ADE 4F

ADE 1F2

**Technical data**

**Ex e cable glands metal ADE ...**

Marking accd. to 2014/34/EU	⊕ II 2 G Ex db eb IIC / ⊕ II 2 D Ex tb IIIC	
EC-Type Examination Certificate	INERIS 12 ATEX 0032X	
IECEX Certificate of Conformity	IECEX INE 12.0025X	
Marking accd. to IECEx	Ex db eb IIC / Ex tb IIIC / Ex e II / Ex tD	
Permissible ambient temperature	Neoprene	-30 °C to +80 °C
	Silikon	-60 °C to +140 °C (option)
Degree of protection accd. to EN 60529	IP66 / IP68 - 10 bar	
Thread	ISO-thread accd. ISO 965/1, ISO 965R and EN 60423	
Enclosure material	Nickel-plated brass (CuZn gal. Ni), stainless steel, bronze, natural brass option	

## Ex-cable glands ADE 1F2



ADE 1F2 ISO

3

### Ordering details

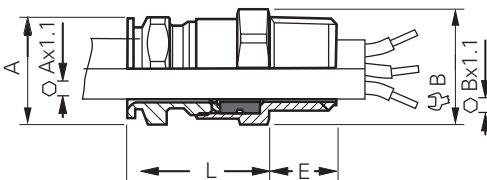
ISO	Type	Cable Ø outside mm	A mm	B mm	E mm	L mm	Order No. CuZn gal. Ni Neoprene	Order No. CuZn gal. Ni Silikon	Order No. stainless steel Neoprene
<b>Cable gland type ADE 1F2 for unarmoured cable with ISO thread</b>									
M12 x 1.5	4	4.5 - 8	17	17	15	26	<b>CAP 806 404 V1</b>	<b>CAP 806 405 V1</b>	<b>CAP 806 409 V1</b>
M16 x 1.5	4	4.5 - 8.5	19	17	15	26	<b>CAP 806 594 V1</b>	<b>CAP 806 595 V1</b>	<b>CAP 806 599 V1</b>
M16 x 1.5	5	7 - 12	19	19	15	29.5	<b>CAP 806 504 V1</b>	<b>CAP 806 505 V1</b>	<b>CAP 806 509 V1</b>
M20 x 1.5	3	2.75 - 5.5	24	15	15	24	<b>CAP 806 664 V1</b>	<b>CAP 806 665 V1</b>	<b>CAP 806 669 V1</b>
M20 x 1.5	4	4.5 - 8.5	24	17	15	26	<b>CAP 806 674 V1</b>	<b>CAP 806 675 V1</b>	<b>CAP 806 679 V1</b>
M20 x 1.5	5	7 - 12	24	19	15	29.5	<b>CAP 806 694 V1</b>	<b>CAP 806 695 V1</b>	<b>CAP 806 699 V1</b>
M20 x 1.5	6	10 - 16	24	24	15	32	<b>CAP 806 604 V1</b>	<b>CAP 806 605 V1</b>	<b>CAP 806 609 V1</b>
M25 x 1.5	5	7 - 12	30	19	15	29.5	<b>CAP 806 774 V1</b>	<b>CAP 806 775 V1</b>	<b>CAP 806 779 V1</b>
M25 x 1.5	6	10 - 16	30	24	15	32	<b>CAP 806 794 V1</b>	<b>CAP 806 795 V1</b>	<b>CAP 806 799 V1</b>
M25 x 1.5	7	13.5 - 20.5	30	30	15	38.5	<b>CAP 806 704 V1</b>	<b>CAP 806 705 V1</b>	<b>CAP 806 709 V1</b>
M32 x 1.5	8	18 - 27.5	41	41	15	46	<b>CAP 806 804 V1</b>	<b>CAP 806 805 V1</b>	<b>CAP 806 809 V1</b>
M40 x 1.5	9	23 - 34	48	48	15	50	<b>CAP 806 904 V1</b>	<b>CAP 806 905 V1</b>	<b>CAP 806 909 V1</b>
M50 x 1.5	10	29 - 41	55	55	16	52	<b>CAP 807 004 V1</b>	<b>CAP 807 005 V1</b>	<b>CAP 807 009 V1</b>
M50 x 1.5	11	35 - 45	64	64	16	56.5	<b>CAP 807 084 V1</b>	<b>CAP 807 085 V1</b>	<b>CAP 807 089 V1</b>
M63 x 1.5	12	42 - 56	72	72	17	60	<b>CAP 807 204 V1</b>	<b>CAP 807 205 V1</b>	<b>CAP 807 209 V1</b>
M75 x 1.5	13	50 - 65	85	85	18	67.5	<b>CAP 807 304 V1</b>	<b>CAP 807 305 V1</b>	<b>CAP 807 309 V1</b>
M90 x 2.0	14	58 - 74	95	95	22	69	<b>CAP 807 594 V1</b>	<b>CAP 807 595 V1</b>	<b>CAP 807 599 V1</b>
M90 x 2.0	15	66 - 83	110	110	22	80	<b>CAP 807 504 V1</b>	<b>CAP 807 505 V1</b>	<b>CAP 807 509 V1</b>
M110 x 2.0	16	75 - 93	120	120	22	80	<b>CAP 807 604 V1</b>	<b>CAP 807 605 V1</b>	<b>CAP 807 609 V1</b>
M110 x 2.0	17	85 - 104	135	135	22	90	<b>CAP 807 704 V1</b>	<b>CAP 807 705 V1</b>	<b>CAP 807 709 V1</b>

Please use sealing washers (see page 2.3.22).

For cable gland kits with washer and lock nut please add "K1" at the end of the order No.

Example: **CAP 806 404 V1 K1** contains a **ADE 1F2 M12 x 1.5 type 4 + 1 x MsNi lock nut M12 + 1 x green fibre gasket for M12**

### Dimension drawing



Type ADE 1F2

Dimensions in mm



ADE 1F2 NPT

Ordering details

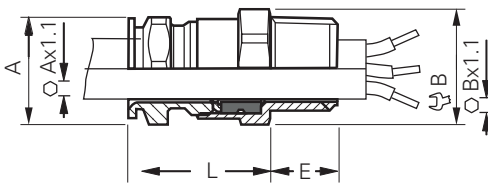
NPT	Type	Cable Ø outside mm	A mm	B mm	E mm	L mm	Order No. CuZn gal. Ni Neoprene	Order No. CuZn gal. Ni Silikon	Order No. stainless steel Neoprene
<b>Cable gland type ADE 1F2 for unarmoured cable with NPT thread</b>									
1/2"	3	2.75 - 5.5	24	15	22.2	24	CAP 808 664 V1	CAP 808 665 V1	CAP 808 669 V1
1/2"	4	4.5 - 8.5	24	17	22.2	26	CAP 808 674 V1	CAP 808 675 V1	CAP 808 679 V1
1/2"	5	7 - 12	24	19	22.2	29.5	CAP 808 694 V1	CAP 808 695 V1	CAP 808 699 V1
1/2"	6	10 - 15.5	24	24	22.2	32	CAP 808 604 V1	CAP 808 605 V1	CAP 808 609 V1
3/4"	5	7 - 12	30	19	22.5	29.5	CAP 808 774 V1	CAP 808 775 V1	CAP 808 779 V1
3/4"	6	10 - 16	30	24	22.5	32	CAP 808 794 V1	CAP 808 795 V1	CAP 808 799 V1
3/4"	7	13.5 - 20.5	30	30	22.5	38.5	CAP 808 704 V1	CAP 808 705 V1	CAP 808 709 V1
1"	8	18 - 26	41	41	27.3	46	CAP 808 804 V1	CAP 808 805 V1	CAP 808 809 V1
1 1/4"	9	23 - 34	48	48	28	50	CAP 808 904 V1	CAP 808 905 V1	CAP 808 909 V1
1 1/2"	10	29 - 41	55	55	28.5	52	CAP 809 004 V1	CAP 809 005 V1	CAP 809 009 V1
2"	11	35 - 48	64	64	29.2	56.5	CAP 809 294 V1	CAP 809 295 V1	CAP 809 299 V1
2"	12	42 - 53	72	72	29.2	60	CAP 809 204 V1	CAP 809 205 V1	CAP 809 209 V1
2 1/2"	13	50 - 62.5	85	85	42.5	67.5	CAP 809 404 V1	CAP 809 405 V1	CAP 809 409 V1
3"	14	58 - 74	95	95	44	69	CAP 809 594 V1	CAP 809 595 V1	CAP 809 599 V1
3"	15	66 - 78	110	110	44	80	CAP 809 504 V1	CAP 809 505 V1	CAP 809 509 V1
3 1/2"	16	75 - 92	120	120	45.2	80	CAP 809 604 V1	CAP 809 605 V1	CAP 809 609 V1
4"	17	82 - 104	135	135	46.5	90	CAP 809 704 V1	CAP 809 705 V1	CAP 809 709 V1

Please use sealing washers (see page 2.3.22).

For cable gland kits with washer and lock nut please add "K1" at the end of the order No.

Example: CAP 808 604 V1 K1 contains a ADE 1F2 1/2" type 6 + 1 x MsNi lock nut 1/2" + 1 x green fibre gasket for 1/2"

Dimension drawing



Type ADE 1F2

## Ex-cable glands ADE 4F



ADE 4F ISO

3

### Ordering details

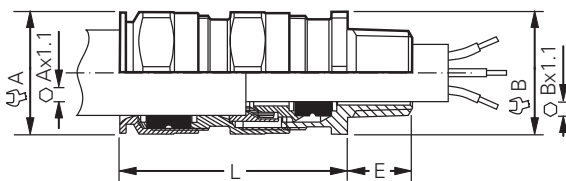
ISO	Type	Cable Ø inside mm	Cable Ø outside mm	A mm	B mm	E mm	L mm	Order No. CuZn gal. Ni Neoprene	Order No. CuZn gal. Ni Silikon	Order No. stainless steel Neoprene
<b>Cable gland type ADE 4F for armoured cable with ISO thread</b>										
M12 x 1.5	5	4.5 - 8.5	7.0 - 12	19	19	15	36	<b>CAP 846 404 V1</b>	<b>CAP 846 405 V1</b>	<b>CAP 846 409 V1</b>
M16 x 1.5	5	4.5 - 8.5	7.0 - 12	19	19	15	36	<b>CAP 846 594 V1</b>	<b>CAP 846 595 V1</b>	<b>CAP 846 599 V1</b>
M16 x 1.5	6	7.0 - 12	10 - 16	19	24	15	36	<b>CAP 846 504 V1</b>	<b>CAP 846 505 V1</b>	<b>CAP 846 509 V1</b>
M20 x 1.5	5	4.5 - 8.5	7.0 - 12	19	24	15	36	<b>CAP 846 674 V1</b>	<b>CAP 846 675 V1</b>	<b>CAP 846 679 V1</b>
M20 x 1.5	6	7.0 - 12	10 - 16	24	24	15	42	<b>CAP 846 694 V1</b>	<b>CAP 846 695 V1</b>	<b>CAP 846 699 V1</b>
M20 x 1.5	7	10 - 16	13.5 - 21	30	30	15	46	<b>CAP 846 604 V1</b>	<b>CAP 846 605 V1</b>	<b>CAP 846 609 V1</b>
M25 x 1.5	6	7.0 - 12	10 - 16	24	30	15	42	<b>CAP 846 774 V1</b>	<b>CAP 846 775 V1</b>	<b>CAP 846 779 V1</b>
M25 x 1.5	7	10 - 16	13.5 - 21	30	30	15	46	<b>CAP 846 794 V1</b>	<b>CAP 846 795 V1</b>	<b>CAP 846 799 V1</b>
M25 x 1.5	8	13.5 - 21	18 - 27.5	41	41	15	56	<b>CAP 846 704 V1</b>	<b>CAP 846 705 V1</b>	<b>CAP 846 709 V1</b>
M32 x 1.5	8	13.5 - 21	18 - 27.5	41	41	15	56	<b>CAP 846 894 V1</b>	<b>CAP 846 895 V1</b>	<b>CAP 846 899 V1</b>
M32 x 1.5	9	18 - 27.5	23 - 34	48	48	15	63	<b>CAP 846 804 V1</b>	<b>CAP 846 805 V1</b>	<b>CAP 846 809 V1</b>
M40 x 1.5	9	18 - 27.5	23 - 34	48	48	15	63	<b>CAP 846 994 V1</b>	<b>CAP 846 995 V1</b>	<b>CAP 846 999 V1</b>
M40 x 1.5	10	23 - 34	29 - 41	55	55	15	68	<b>CAP 846 904 V1</b>	<b>CAP 846 905 V1</b>	<b>CAP 846 909 V1</b>
M50 x 1.5	10	23 - 34	29 - 41	55	55	16	68	<b>CAP 847 094 V1</b>	<b>CAP 847 095 V1</b>	<b>CAP 847 099 V1</b>
M50 x 1.5	11	29 - 41	35 - 48	64	64	16	74	<b>CAP 847 004 V1</b>	<b>CAP 847 005 V1</b>	<b>CAP 847 009 V1</b>
M63 x 1.5	12	35 - 48	42 - 56	72	72	17	77	<b>CAP 847 294 V1</b>	<b>CAP 847 295 V1</b>	<b>CAP 847 299 V1</b>
M63 x 1.5	13	42 - 56	50 - 65	85	85	17	85	<b>CAP 847 204 V1</b>	<b>CAP 847 205 V1</b>	<b>CAP 847 209 V1</b>
M75 x 1.5	13	42 - 56	50 - 65	85	85	18	85	<b>CAP 847 394 V1</b>	<b>CAP 847 395 V1</b>	<b>CAP 847 399 V1</b>
M75 x 1.5	14	50 - 65	58 - 74	95	95	18	92	<b>CAP 847 304 V1</b>	<b>CAP 847 305 V1</b>	<b>CAP 847 309 V1</b>
M80 x 2.0	14	50 - 65	58 - 74	95	95	20	92	<b>CAP 847 494 V1</b>	<b>CAP 847 495 V1</b>	<b>CAP 847 499 V1</b>
M80 x 2.0	15	58 - 74	66 - 83	110	110	20	104	<b>CAP 847 404 V1</b>	<b>CAP 847 405 V1</b>	<b>CAP 847 409 V1</b>
M90 x 2.0	15	58 - 74	66 - 83	110	110	22	104	<b>CAP 847 594 V1</b>	<b>CAP 847 595 V1</b>	<b>CAP 847 599 V1</b>
M90 x 2.0	16	66 - 83	75 - 93	120	120	22	108	<b>CAP 847 504 V1</b>	<b>CAP 847 505 V1</b>	<b>CAP 847 509 V1</b>
M90 x 2.0	17	75 - 93	85 - 104	135	120	22	108	<b>CAP 847 574 V1</b>	<b>CAP 847 575 V1</b>	<b>CAP 847 579 V1</b>

Please use sealing washers (see page 2.3.22).

For cable gland kits with washer and lock nut please add "K1" at the end of the order No.

Example: **CAP 846 804 V1 K1** contains a **ADE 4F M32 x 1.5 type 9** + **1 x MsNi lock nut M32** + **1 x green fibre gasket for M32**

### Dimension drawing



Type ADE 4F

Dimensions in mm



ADE 4F NPT

Ordering details

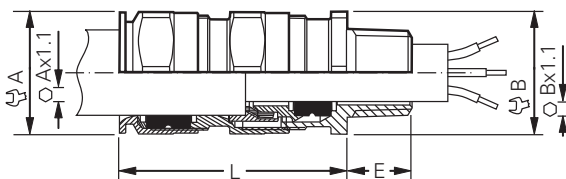
NPT	Type	Cable Ø inside mm	Cable Ø outside mm	A mm	B mm	E mm	L mm	Order No. CuZn gal. Ni Neoprene	Order No. CuZn gal. Ni Silikon	Order No. stainless steel Neoprene
1/4"	5	4.5 - 8.5	7.0 - 12	19	19	12	36	CAP 848 404 V1	CAP 848 405 V1	CAP 848 409 V1
3/8"	5	4.5 - 8.5	7.0 - 12	19	19	12	36	CAP 848 594 V1	CAP 848 595 V1	CAP 848 599 V1
3/8"	6	7.0 - 12	10 - 16	24	24	12	42	CAP 848 504 V1	CAP 848 505 V1	CAP 848 509 V1
1/2"	5	4.5 - 8.5	7.0 - 12	19	24	16	36	CAP 848 674 V1	CAP 848 675 V1	CAP 848 679 V1
1/2"	6	7.0 - 12	10 - 16	24	24	16	42	CAP 848 694 V1	CAP 848 695 V1	CAP 848 699 V1
1/2"	7	10 - 16	13.5 - 21	30	30	16	46	CAP 848 604 V1	CAP 848 605 V1	CAP 848 609 V1
3/4"	6	7.0 - 12	10 - 16	24	30	16	42	CAP 848 774 V1	CAP 848 775 V1	CAP 848 779 V1
3/4"	7	10 - 16	13.5 - 21	30	30	16	46	CAP 848 794 V1	CAP 848 795 V1	CAP 848 799 V1
3/4"	8	13.5 - 21	18 - 27.5	41	41	16	56	CAP 848 704 V1	CAP 848 705 V1	CAP 848 709 V1
1"	8	13.5 - 21	18 - 27.5	41	41	20	46	CAP 848 894 V1	CAP 848 895 V1	CAP 848 899 V1
1"	9	18 - 27.5	23 - 34	48	48	20	63	CAP 848 804 V1	CAP 848 805 V1	CAP 848 809 V1
1 1/4"	9	18 - 27.5	23 - 34	48	48	20	63	CAP 848 994 V1	CAP 848 995 V1	CAP 848 999 V1
1 1/4"	10	23 - 34	29 - 41	55	55	20	68	CAP 848 904 V1	CAP 848 905 V1	CAP 848 909 V1
1 1/2"	10	23 - 34	29 - 41	55	55	20	68	CAP 849 094 V1	CAP 849 095 V1	CAP 849 099 V1
1 1/2"	11	29 - 41	35 - 48	64	64	20	74	CAP 849 004 V1	CAP 849 005 V1	CAP 849 009 V1
2"	12	35 - 48	42 - 56	72	72	20	77	CAP 849 294 V1	CAP 849 295 V1	CAP 849 299 V1
2"	13	42 - 56	50 - 65	85	85	20	85	CAP 849 204 V1	CAP 849 205 V1	CAP 849 209 V1
2 1/2"	13	42 - 56	50 - 65	85	85	28	85	CAP 849 494 V1	CAP 849 495 V1	CAP 849 499 V1
2 1/2"	14	50 - 65	58 - 74	95	95	28	92	CAP 849 404 V1	CAP 849 405 V1	CAP 849 409 V1
3"	15	58 - 74	66 - 83	110	110	30	104	CAP 849 594 V1	CAP 849 595 V1	CAP 849 599 V1
3"	16	66 - 83	75 - 93	120	120	30	108	CAP 849 504 V1	CAP 849 505 V1	CAP 849 509 V1

Please use sealing washers (see page 2.3.22).

For cable gland kits with washer and lock nut please add "K1" at the end of the order No.

Example: CAP 848 994 V1 K1 contains a ADE 4F -1 1/4" type 9 + 1 x MsNi lock nut 1 1/4" + 1 x green fibre gasket for 1 1/4"

Dimension drawing



Type ADE 4F

## Ex-cable glands ADE 6F



ADE 6F ISO

3

### Ordering details

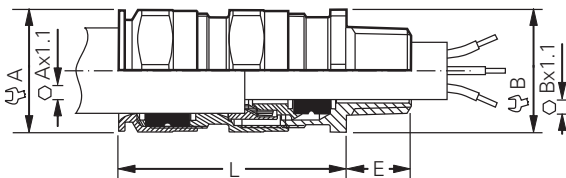
ISO	Type	Cable Ø inside mm	Cable Ø outside mm	A mm	B mm	E mm	L mm	Order No. CuZn gal. Ni Elastomere	Order No. stainless steel Elastomere
<b>Cable gland type ADE 6F for armoured cable with ISO thread</b>									
M16 x 1.5	5	3 - 7.5	6 - 12	19	19	15	46	<b>CAP 965 594 V1</b>	<b>CAP 965 599 V1</b>
M20 x 1.5	5	3 - 7.5	6 - 12	19	24	15	46	<b>CAP 965 674 V1</b>	<b>CAP 965 679 V1</b>
M20 x 1.5	6	6.5 - 11	8.5 - 16	24	24	15	53	<b>CAP 965 694 V1</b>	<b>CAP 965 699 V1</b>
M20 x 1.5	7	9 - 14.5	12 - 21	30	30	15	59	<b>CAP 965 604 V1</b>	<b>CAP 965 609 V1</b>
M25 x 1.5	7	9 - 14.5	12 - 21	30	30	15	59	<b>CAP 965 794 V1</b>	<b>CAP 965 799 V1</b>
M25 x 1.5	8	12 - 19.5	16 - 27.5	41	41	15	74.5	<b>CAP 965 704 V1</b>	<b>CAP 965 709 V1</b>
M32 x 1.5	8	12 - 19.5	16 - 27.5	41	41	15	74.5	<b>CAP 965 894 V1</b>	<b>CAP 965 899 V1</b>
M32 x 1.5	9	17.5 - 26	21 - 34	48	48	15	83.5	<b>CAP 965 804 V1</b>	<b>CAP 965 809 V1</b>
M40 x 1.5	9	17.5 - 26	21 - 34	48	48	15	83.5	<b>CAP 965 994 V1</b>	<b>CAP 965 999 V1</b>
M40 x 1.5	10	23 - 33	27 - 41	55	55	15	92	<b>CAP 965 904 V1</b>	<b>CAP 965 909 V1</b>
M50 x 1.5	10	23 - 33	27 - 41	55	55	16	92	<b>CAP 966 094 V1</b>	<b>CAP 966 099 V1</b>
M50 x 1.5	11	27 - 41	33 - 48	64	64	16	104	<b>CAP 966 004 V1</b>	<b>CAP 966 009 V1</b>

Please use sealing washers (see page 2.3.22).

For cable gland kits with washer and lock nut please add "K1" at the end of the order No.

Example: **CAP 965 794 V1 K1** contains a **ADE 6F M25 x 1.5 type 7** + **1 x MsNi lock nut 1 x M25** + **1 x green fibre gasket for M25**

### Dimension drawing



Type ADE 6F ISO

Dimensions in mm



ADE 6F NPT

Ordering details

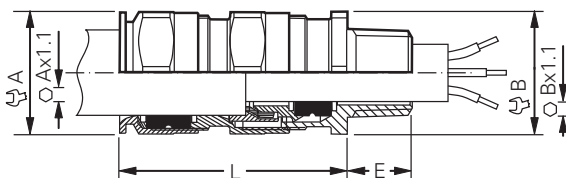
NPT	Type	Cable Ø inside mm	Cable Ø outside mm	A mm	B mm	E mm	L mm	Order No. CuZn gal. Ni Elastomer	Order No. stainless steel Elastomer
<b>Cable gland type ADE 6F for armoured cable with NPT thread</b>									
3/8"	5	3 - 7.5	6 - 12	19	19	12	46	<b>CAP 967 594 V1</b>	<b>CAP 967 599 V1</b>
1/2"	5	3 - 7.5	6 - 12	19	24	22.2	46	<b>CAP 967 674 V1</b>	<b>CAP 967 679 V1</b>
1/2"	6	6.5 - 11	8.5 - 16	24	24	22.2	53	<b>CAP 967 694 V1</b>	<b>CAP 967 699 V1</b>
1/2"	7	9 - 14.5	12 - 21	30	30	22.2	59	<b>CAP 967 604 V1</b>	<b>CAP 967 609 V1</b>
3/4"	7	9 - 14.5	12 - 21	30	30	22.5	59	<b>CAP 967 794 V1</b>	<b>CAP 967 799 V1</b>
3/4"	8	12 - 19.5	16 - 27.5	41	41	22.5	74.5	<b>CAP 967 704 V1</b>	<b>CAP 967 709 V1</b>
1"	8	12 - 19.5	16 - 27.5	41	41	27.3	74.5	<b>CAP 967 894 V1</b>	<b>CAP 967 899 V1</b>
1"	9	17.5 - 26	21 - 34	48	48	27.3	83.5	<b>CAP 967 804 V1</b>	<b>CAP 967 809 V1</b>
1 1/4"	9	17.5 - 26	21 - 34	48	48	28	83.5	<b>CAP 967 994 V1</b>	<b>CAP 967 999 V1</b>
1 1/4"	10	23 - 33	27 - 41	55	55	28	92	<b>CAP 967 904 V1</b>	<b>CAP 967 909 V1</b>
1 1/2"	10	23 - 33	27 - 41	55	55	28.5	92	<b>CAP 968 094 V1</b>	<b>CAP 968 099 V1</b>
2"	11	27 - 41	33 - 48	64	64	29.2	104	<b>CAP 968 294 V1</b>	<b>CAP 968 299 V1</b>

Please use sealing washers (see page 2.3.22).

For cable gland kits with washer and lock nut please add "K1" at the end of the order No.

Example: **CAP 967 704 V1 K1** contains a **ADE 6F 3/4"** type **8** + **1 x MsNi lock nut 1 x 3/4"** + **1 x green fibre gasket for 3/4"**

Dimension drawing



Type ADE 6F NPT



## Accessories for Ex-cable glands ADE



Lead sheath washer



Strain clamp



PVC-Shroud

3

### Accessories for cable glands type ADE

Type ADE	Ø D/mm	OU	Order No.
<b>Ordering details shrouds for cable glands</b>			
4	16	10	CAP 506 040
5	20	10	CAP 506 050
6	25	10	CAP 506 060
7	31	10	CAP 506 070
8	43	10	CAP 506 080
9	52	10	CAP 506 090
10	59	10	CAP 506 100
11	67	10	CAP 506 110
12	75	10	CAP 506 120
13	90	10	CAP 506 130
14	100	10	CAP 506 140
15	116	10	CAP 506 150
16	127	10	CAP 506 160

Type ADE	for cable Ø mm	for A/F	B mm	C mm	Weight approx. kg	OU	Order No.
<b>Ordering details for strain clamp</b>							
4	4 – 8.5	17	20	5	0.0085	1	CAP 810 444
5	6 – 12	19	22	5	0.007	1	CAP 810 534
6	8.5 – 16	24	27.5	6	0.015	1	CAP 810 634
7	12 – 21	30	33.5	8	0.028	1	CAP 810 734
8	16 – 27.5	41	45	8	0.044	1	CAP 810 834
9	21 – 34	48	52	9.5	0.061	1	CAP 810 934
10	27 – 41	55	59	9.5	0.069	1	CAP 811 034
11	33 – 48	64	69	12	0.13	1	CAP 811 134
12	40 – 56	72	78	12	0.16	1	CAP 811 234
13	47 – 65	85	92	16	0.37	1	CAP 811 334
14	54 – 74	95	103	16	0.42	1	CAP 811 434
15	63 – 83	110	118	18	0.64	1	CAP 811 534
16	72 – 93	120	128	18	0.68	1	CAP 811 634

Type ADE	for outer lead sheath Ø mm	A mm	H mm	Weight/g	OU	Order No.
<b>Ordering details lead sheath washer for use with lead cables in combination with ADE 4F glands</b>						
5	4.5 – 7.5	10	3.2	0.25	10	CAP 560 530
6	7 – 11	13.9	4	0.3	10	CAP 560 630
7	10 – 15	18.3	4.8	0.6	10	CAP 560 730
8	13.5 – 20	23.8	5.7	0.9	10	CAP 560 830
9	18 – 26.5	31	7.2	1.5	10	CAP 560 930
10	23 – 32.5	38.3	8.2	2.8	10	CAP 561 030
11	29 – 39.5	45.3	8.8	3.8	10	CAP 561 130
12	35 – 46.5	52.8	9.5	5.8	10	CAP 561 230
13	42 – 54.5	60.8	10.1	7.3	10	CAP 561 330
14	50 – 61	71	11.4	11	10	CAP 561 430
15	58 – 72.5	80.5	12.6	14.5	10	CAP 561 530
16	66 – 81.5	89.5	12.6	14.5	10	CAP 561 630

Cable glands with PG-thread are available on request.

The order No. will show 1 pcs.

Please note that only order units (OU) can be ordered.



Lock nut



Earth tag

Accessories for cable glands type ADE

Thread	Dimensions A mm	B mm	ØC mm	ØD mm	E mm	Weight approx. kg	OU	Order No.
<b>Ordering details earth tag for glands</b>								
M12 x 1.5 ISO	48.75	30	6.75	24.5	13	0.008	10	<b>CAP 567 024</b>
M16 x 1.5 ISO	48.75	30	6.75	24.5	13	0.008	10	<b>CAP 567 034</b>
M20 x 1.5 ISO	53.8	33	7	28.6	13	0.008	10	<b>CAP 567 054</b>
M25 x 1.5 ISO	61.5	36	10.5	34	17	0.011	10	<b>CAP 567 074</b>
M32 x 1.5 ISO	73	41	12.2	42	22	0.015	10	<b>CAP 567 094</b>
M40 x 1.5 ISO	86.5	44.5	13.5	54	30	0.025	1	<b>CAP 567 124</b>
M50 x 1.5 ISO	111.5	58	13.5	67	40	0.041	1	<b>CAP 567 154</b>
M63 x 1.5 ISO	125.5	67	13.5	77	40	0.044	1	<b>CAP 567 184</b>
3/8" NPT	53.8	33	7	28.6	13	0.008	10	<b>CAP 567 044</b>
1/2" NPT	61.5	36	10.5	34	17	0.008	10	<b>CAP 567 064</b>
3/4" NPT	73	41	12.2	42	22	0.008	10	<b>CAP 567 084</b>
1" NPT	73	41	12.2	42	22	0.011	10	<b>CAP 567 104</b>
1 1/4" NPT	86.5	44.5	13.5	54	30	0.015	10	<b>CAP 567 134</b>
1 1/2" NPT	111.5	58	13.5	67	40	0.025	1	<b>CAP 567 154</b>
2" NPT	125.5	67	13.5	77	40	0.041	1	<b>CAP 567 174</b>
2 1/2" NPT	137.5	73	13.5	89	40	0.044	1	<b>CAP 567 194</b>

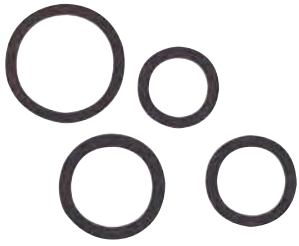
Thread ISO/NPT	A/F mm	L mm	OU	Order No.
<b>Ordering details lock nut CuZn gal. Ni</b>				
M12 x 1.5 ISO	14	2.8	10	<b>CAP 221 294</b>
M16 x 1.5 ISO	18	2.8	10	<b>CAP 221 694</b>
M20 x 1.5 ISO	23	3.0	10	<b>CAP 222 094</b>
M25 x 1.5 ISO	28	3.0	10	<b>CAP 222 594</b>
M32 x 1.5 ISO	36	3.5	10	<b>CAP 223 294</b>
M40 x 1.5 ISO	44	4.0	10	<b>CAP 224 094</b>
M50 x 1.5 ISO	54	5.0	10	<b>CAP 225 094</b>
M63 x 1.5 ISO	70	6.0	10	<b>CAP 226 394</b>
1/4" NPT	16	2.8	10	<b>CAP 280 104</b>
3/8" NPT	20	2.8	10	<b>CAP 280 114</b>
1/2" NPT	24	3.5	10	<b>CAP 280 124</b>
3/4" NPT	30	3.5	10	<b>CAP 280 134</b>
1" NPT	37	4.5	10	<b>CAP 280 144</b>
1 1/4" NPT	47	4.5	10	<b>CAP 280 154</b>
1 1/2" NPT	52	5.0	10	<b>CAP 280 164</b>
2" NPT	64	5.5	10	<b>CAP 280 174</b>
2 1/2" NPT	77	6.5	10	<b>CAP 280 184</b>
3" NPT	95	8.0	10	<b>CAP 280 194</b>
3 1/2" NPT	110	10.0	10	<b>CAP 280 204</b>
4" NPT	120	11.0	10	<b>CAP 280 214</b>

Cable glands with PG-thread are available on request.

The order No. will show 1 pcs.

Please note that only order units (OU) can be ordered.

## Accessories for Ex-cable glands ADE



Gasket

3

### Accessories for cable glands type ADE

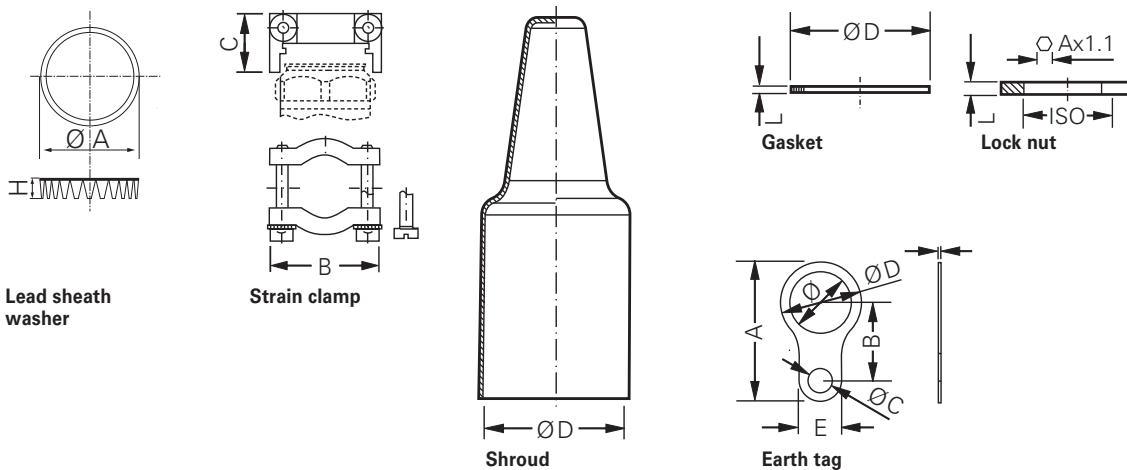
Thread	Ø D mm	L mm	OU	Order No. fibrous material	Order No. neopren
<b>Ordering details gasket for glands</b>					
M12	18	1.2	10	CAP 221 245	CAP 221 249
M16	22	1.2	10	CAP 221 645	CAP 221 649
M20	24	1.2	10	CAP 222 045	CAP 222 049
M25	30	1.5	10	CAP 222 545	CAP 222 549
M32	42	1.5	10	CAP 223 245	CAP 223 249
M40	52	1.5	10	CAP 224 045	CAP 224 049
M50	63	1.5	10	CAP 225 045	CAP 225 049
M63	77	2.0	10	CAP 226 345	CAP 226 349
1/4"	20	1.5	10	CAP 239 014	CAP 229 014
3/8"	22	1.5	10	CAP 239 038	CAP 229 038
1/2"	27	1.5	10	CAP 239 012	CAP 229 012
3/4"	33	1.5	10	CAP 239 034	CAP 229 034
1"	41	1.5	10	CAP 239 010	CAP 229 010
1 1/4"	52	1.5	10	CAP 239 114	CAP 229 114
1 1/2"	57	1.5	10	CAP 239 112	CAP 229 112
2"	71	2.0	10	CAP 239 020	CAP 229 020
2 1/2"	85	2.0	10	CAP 239 212	CAP 229 212
3"	104	2.0	10	CAP 238 049	CAP 229 300
3 1/2"	120	2.0	10	CAP 239 312	CAP 229 312

Cable glands with PG-thread are available on request.

The order No. will show 1 pcs.

Please note that only order units (OU) can be ordered.

### Dimension drawing



Dimensions in mm